

No matter who you are, no  
matter where you are on your  
spiritual journey, you are  
welcome here.

*Ordinary Life*

*Ordinary Life*

“No problem can be solved  
with the same level of  
consciousness that created  
it.”



In spiritual work we awaken from the dream of separation to know that separation is not true and never has been. We are and always have been connected with all that is.

*Ordinary Life*

In spiritual work we awaken from the dream of separation to know that separation is not true and never has been. We are and always have been connected with all that is.

*Ordinary Life*

We live in a “consensus trance.”

*Ordinary Life*



Who is the most trusted  
person or voice in  
America?

*Ordinary Life*

What are the main things  
that we value?

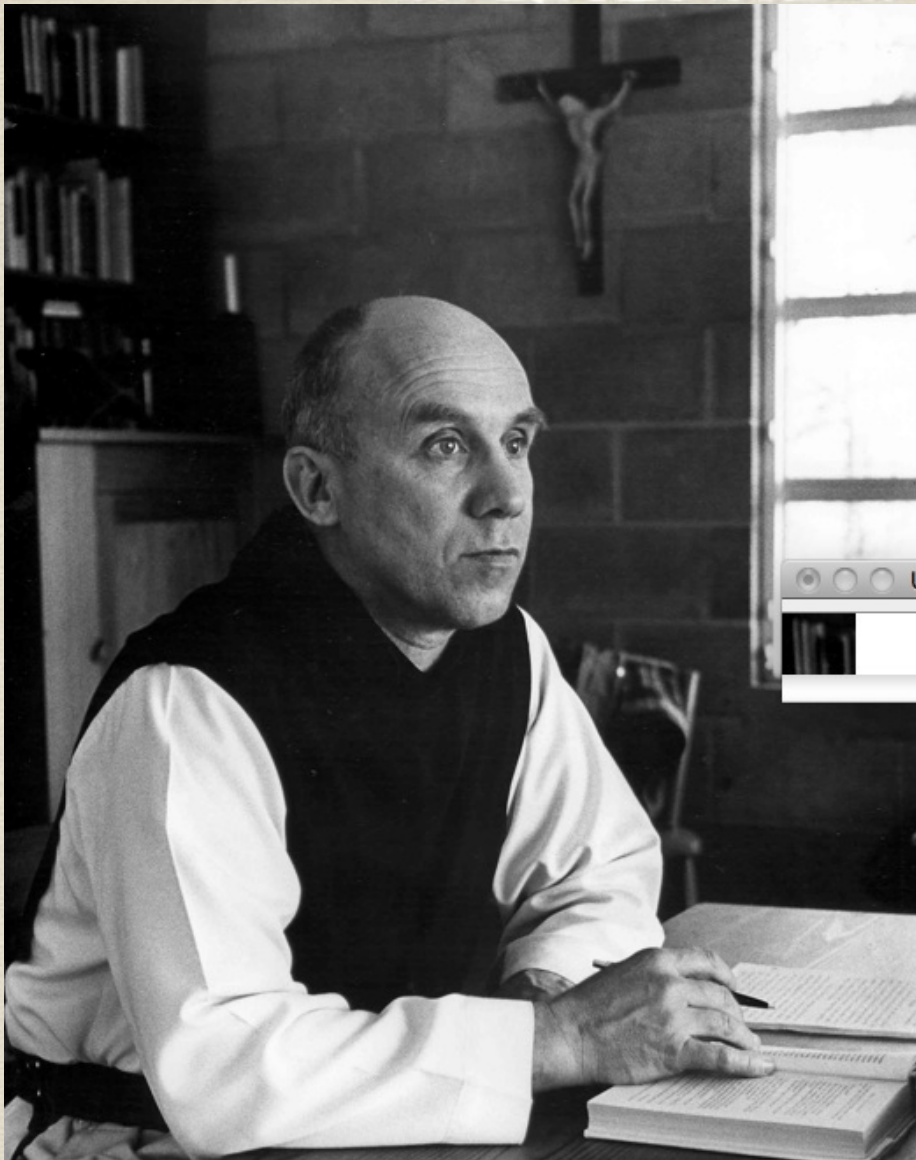
How do we keep these  
things as the “main  
things”?



Who is the  
most trusted  
person in the  
United States?



*Ordinary Life*



Thomas Merton  
1915 - 1968

*Ordinary Life*

“Religion will  
not survive  
based on tribal  
consciousness.  
It will do itself  
in.”



No matter what “good” we undertake to do, if done out of the story of separation, it will not ultimately save us.

For that, we need a miracle.



“There are only two ways to live your life. One is as though nothing is a miracle. The other is as though everything is a miracle.”

*Ordinary Life*



*Ordinary Life*





*Ordinary Life*



Copyrighted Material

John  
Shelby  
Spong

AUTHOR OF  
*Why Christianity Must Change or Die*

# Unbelievable

Why Neither Ancient  
Creeds Nor the  
Reformation Can  
Produce a Living  
Faith Today

*Ordinary Life*

Copyrighted Material

This is the time for boldness.

I want our spiritual and religious work to awaken and liberate us so that we can be empowered to change the world.

We are the people we have been waiting for.



We must learn how to be  
present to Intelligent Heart  
with intelligent hearts.

*Ordinary Life*





ΙΩΝΑ ΝΟΚΙΤΟ

Ⲡ  
Ⲭ

ΙΩΝΑΣ

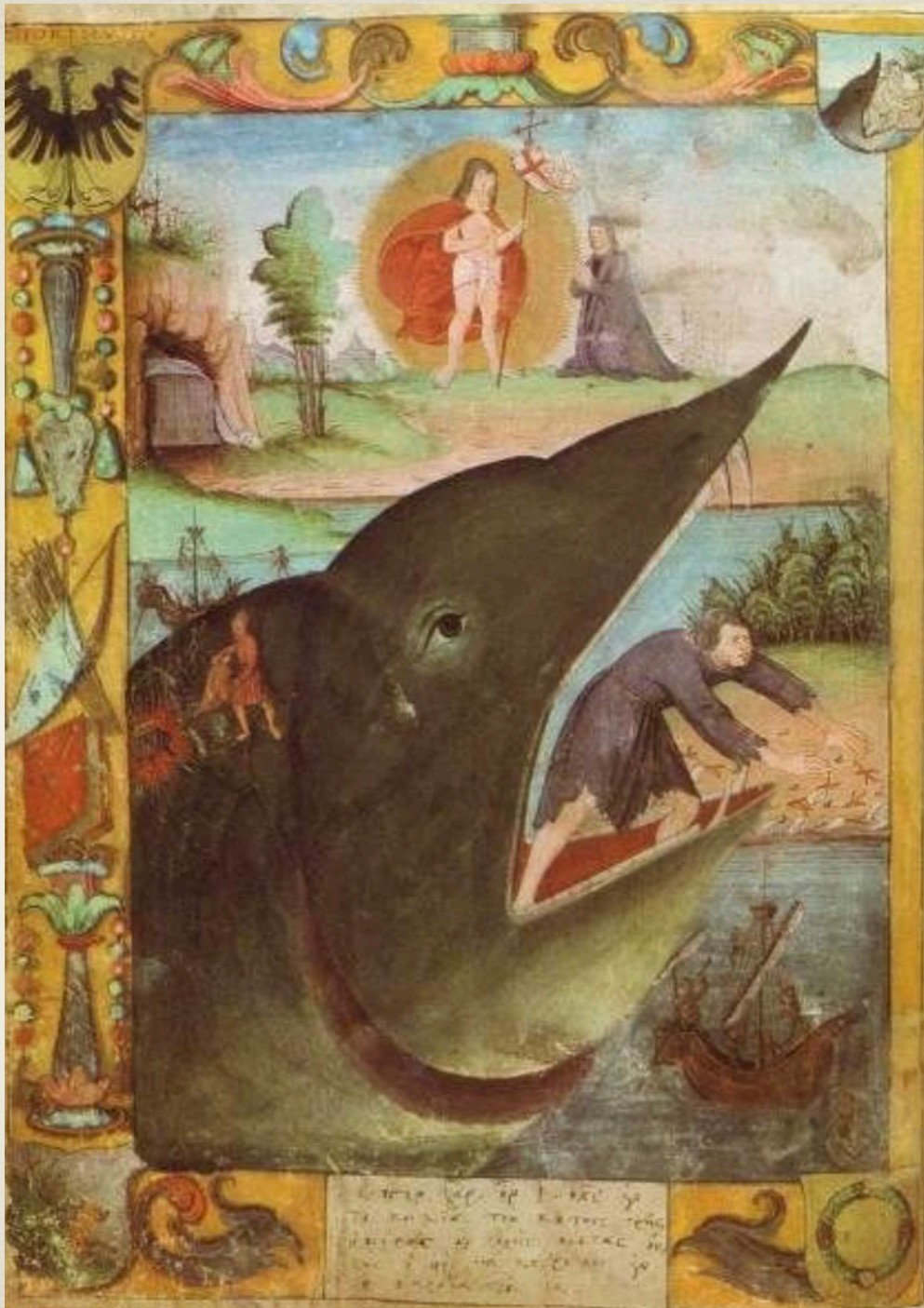
ΕΚ ΚΙΩΝ  
ΑΑ ΕΡΗ  
ΣΑΤΟΜΙ



No one is smart enough to  
be wrong 100% of the time.

Every perspective is both  
true and partial.





*Ordinary Life*



# LIVING LIFE AS A MIRACLE

*Ordinary Life*